

Product datasheet for **TA330731**

BRME1 Rabbit Polyclonal Antibody

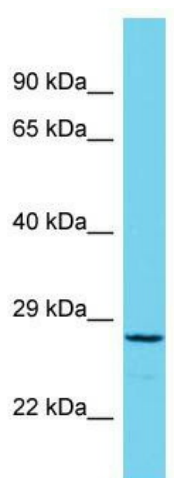
Product data:

Product Type:	Primary Antibodies
Applications:	WB
Recommended Dilution:	WB
Reactivity:	Human
Host:	Rabbit
Isotype:	IgG
Clonality:	Polyclonal
Immunogen:	The immunogen for Anti-C19orf57 antibody is: synthetic peptide directed towards the N-terminal region of Human C19orf57. Synthetic peptide located within the following region: VPSTQQHGEETPGKAVSSSPDEETGSPCRLLRQPEKEPAPLPPSQNSFGRF
Formulation:	Liquid. Purified antibody supplied in 1x PBS buffer with 0.09% (w/v) sodium azide and 2% sucrose. <i>Note that this product is shipped as lyophilized powder to China customers.</i>
Conjugation:	Unconjugated
Storage:	Store at -20°C as received.
Stability:	Stable for 12 months from date of receipt.
Predicted Protein Size:	26 kDa
Gene Name:	chromosome 19 open reading frame 57
Database Link:	NP_077299 Entrez Gene 79173 Human Q0VDD7
Background:	The function of this protein remains unknown.
Synonyms:	MGC11271; MGC149720
Note:	Human: 100%



[View online »](#)

Product images:



Host: Rabbit; Target Name: C19orf57; Sample
Tissue: RPMI-8226 Whole Cell lysates; Antibody
Dilution: 1.0ug/ml