

Product datasheet for **TA330730**

C11orf49 Rabbit Polyclonal Antibody

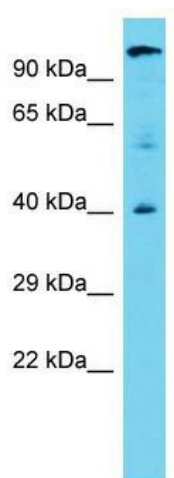
Product data:

Product Type:	Primary Antibodies
Applications:	WB
Recommended Dilution:	WB
Reactivity:	Human
Host:	Rabbit
Isotype:	IgG
Clonality:	Polyclonal
Immunogen:	The immunogen for Anti-C11orf49 antibody is: synthetic peptide directed towards the C-terminal region of Human C11orf49. Synthetic peptide located within the following region: GLVNSVTASPEASCLPSRTPPRVGSPWRPLHHSRKVDGESDGSTEETDES
Formulation:	Liquid. Purified antibody supplied in 1x PBS buffer with 0.09% (w/v) sodium azide and 2% sucrose. <i>Note that this product is shipped as lyophilized powder to China customers.</i>
Conjugation:	Unconjugated
Storage:	Store at -20°C as received.
Stability:	Stable for 12 months from date of receipt.
Predicted Protein Size:	37 kDa
Gene Name:	chromosome 11 open reading frame 49
Database Link:	NP_077018 Entrez Gene 79096 Human Q9H6J7
Background:	The function of this protein remains unknown.
Synonyms:	FLJ22210; MGC4707
Note:	Human: 100%; Rabbit: 93%; Dog: 92%; Pig: 92%; Rat: 92%; Horse: 92%; Guinea pig: 92%; Mouse: 86%



[View online »](#)

Product images:



Host: Rabbit; Target Name: C11orf49; Sample
Tissue: 721_B Whole Cell lysates; Antibody
Dilution: 1.0ug/ml