

Product datasheet for **TA330729**

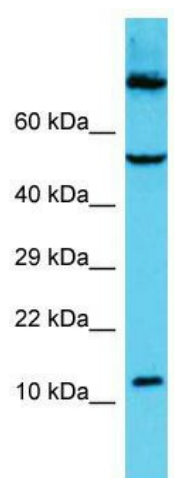
BBLN Rabbit Polyclonal Antibody

Product data:

Product Type:	Primary Antibodies
Applications:	WB
Recommended Dilution:	WB
Reactivity:	Human
Host:	Rabbit
Isotype:	IgG
Clonality:	Polyclonal
Immunogen:	The immunogen for Anti-C9orf16 antibody is: synthetic peptide directed towards the middle region of Human C9orf16. Synthetic peptide located within the following region: INSMLDQINSCLDHLEEKNDHLHARLQELLESNRQTRLEFQQQLGEAPSD
Formulation:	Liquid. Purified antibody supplied in 1x PBS buffer with 0.09% (w/v) sodium azide and 2% sucrose. <i>Note that this product is shipped as lyophilized powder to China customers.</i>
Conjugation:	Unconjugated
Storage:	Store at -20°C as received.
Stability:	Stable for 12 months from date of receipt.
Predicted Protein Size:	9 kDa
Gene Name:	chromosome 9 open reading frame 16
Database Link:	NP_077017 Entrez Gene 79095 Human Q9BUW7
Background:	The function of this protein remains unknown.
Synonyms:	EST00098
Note:	Dog: 100%; Pig: 100%; Rat: 100%; Horse: 100%; Human: 100%; Mouse: 100%; Bovine: 100%; Guinea pig: 100%; Rabbit: 86%; Zebrafish: 83%



[View online »](#)

Product images:

Host: Rabbit; Target Name: C9orf16; Sample Tissue: HCT15 Whole Cell lysates; Antibody Dilution: 1.0ug/ml; C9orf16 is strongly supported by BioGPS gene expression data to be expressed in Human HCT15 cells