

Product datasheet for **TA330728**

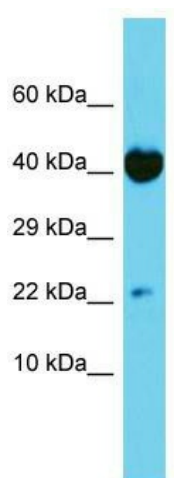
TRAPPC6A Rabbit Polyclonal Antibody

Product data:

Product Type:	Primary Antibodies
Applications:	WB
Recommended Dilution:	WB
Reactivity:	Human
Host:	Rabbit
Isotype:	IgG
Clonality:	Polyclonal
Immunogen:	The immunogen for Anti-TRAPPC6A antibody is: synthetic peptide directed towards the N-terminal region of Human TRAPPC6A. Synthetic peptide located within the following region: HDPDPGPGVSAGLRGEEAGATKGQKMSLSVLEGMGFRVGQALGERLPRET
Formulation:	Liquid. Purified antibody supplied in 1x PBS buffer with 0.09% (w/v) sodium azide and 2% sucrose. <i>Note that this product is shipped as lyophilized powder to China customers.</i>
Conjugation:	Unconjugated
Storage:	Store at -20°C as received.
Stability:	Stable for 12 months from date of receipt.
Predicted Protein Size:	19 kDa
Gene Name:	trafficking protein particle complex 6A
Database Link:	NP_077013 Entrez Gene 79090 Human O75865
Background:	This gene encodes a component of the trafficking protein particle complex, which tethers transport vesicles to the cis-Golgi membrane. Loss of expression of the related gene in mouse affects coat and eye pigmentation, suggesting that the encoded protein may be involved in melanosome biogenesis. Alternatively spliced transcript variants encoding multiple isoforms have been observed for this gene.
Synonyms:	TRS33
Note:	Human: 100%



[View online »](#)

Product images:

Host: Rabbit; Target Name: TRAPPC6A; Sample
Tissue: HT1080 Whole Cell lysates; Antibody
Dilution: 1.0ug/ml