

Product datasheet for TA330727

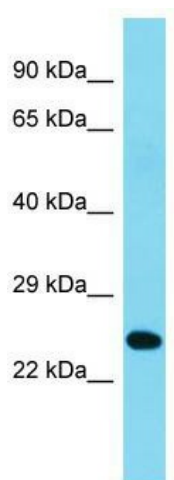
C2orf49 Rabbit Polyclonal Antibody

Product data:

Product Type:	Primary Antibodies
Applications:	WB
Recommended Dilution:	WB
Reactivity:	Human
Host:	Rabbit
Isotype:	IgG
Clonality:	Polyclonal
Immunogen:	The immunogen for Anti-C2orf49 antibody is: synthetic peptide directed towards the middle region of Human C2orf49. Synthetic peptide located within the following region: VDGLRKRPLIVFDGSSTSTSIKVKKTENGDNDRKPPQASFTSNAFRKL
Formulation:	Liquid. Purified antibody supplied in 1x PBS buffer with 0.09% (w/v) sodium azide and 2% sucrose.
Conjugation:	Unconjugated
Storage:	Store at -20°C as received.
Stability:	Stable for 12 months from date of receipt.
Predicted Protein Size:	25 kDa
Gene Name:	chromosome 2 open reading frame 49
Database Link:	NP_076998 Entrez Gene 79074 Human Q9BVC5
Background:	The function of this protein remains unknown.
Synonyms:	asw
Note:	Human: 100%; Bovine: 100%; Rat: 93%; Horse: 93%; Rabbit: 93%; Dog: 92%; Pig: 92%; Guinea pig: 92%; Mouse: 79%


[View online »](#)

Product images:



Host: Rabbit; Target Name: C2orf49; Sample
Tissue: Placenta lysates; Antibody Dilution:
1.0ug/ml