

Product datasheet for **TA330725**

SPATA5L1 Rabbit Polyclonal Antibody

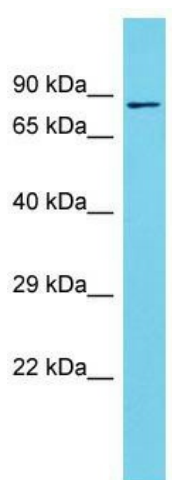
Product data:

Product Type:	Primary Antibodies
Applications:	WB
Recommended Dilution:	WB
Reactivity:	Human
Host:	Rabbit
Isotype:	IgG
Clonality:	Polyclonal
Immunogen:	The immunogen for Anti-SPATA5L1 antibody is: synthetic peptide directed towards the C-terminal region of Human SPATA5L1. Synthetic peptide located within the following region: CDVQERVLSVLLNELDGVGLKTIERRGSKSSQEFQEVFNRSVMIIAATN
Formulation:	Liquid. Purified antibody supplied in 1x PBS buffer with 0.09% (w/v) sodium azide and 2% sucrose. <i>Note that this product is shipped as lyophilized powder to China customers.</i>
Conjugation:	Unconjugated
Storage:	Store at -20°C as received.
Stability:	Stable for 12 months from date of receipt.
Predicted Protein Size:	80 kDa
Gene Name:	spermatogenesis associated 5 like 1
Database Link:	NP_076968 Entrez Gene 79029 Human Q9BVQ7
Background:	The function of this protein remains unknown.
Synonyms:	FLJ12286; MGC5347
Note:	Human: 100%; Rabbit: 100%; Dog: 86%; Pig: 86%; Rat: 85%; Bovine: 85%



[View online »](#)

Product images:



Host: Rabbit; Target Name: SPATA5L1; Sample Tissue: 721_B Whole Cell lysates; Antibody Dilution: 1.0ug/ml; SPATA5L1 is strongly supported by BioGPS gene expression data to be expressed in Human 721_B cells