

## Product datasheet for **TA330724**

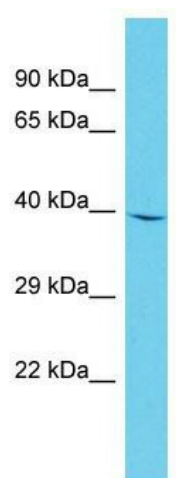
### **C1orf135 (AUNIP) Rabbit Polyclonal Antibody**

#### **Product data:**

<b>Product Type:</b>	Primary Antibodies
<b>Applications:</b>	WB
<b>Recommended Dilution:</b>	WB
<b>Reactivity:</b>	Human
<b>Host:</b>	Rabbit
<b>Isotype:</b>	IgG
<b>Clonality:</b>	Polyclonal
<b>Immunogen:</b>	The immunogen for Anti-AUNIP antibody is: synthetic peptide directed towards the N-terminal region of Human AUNIP. Synthetic peptide located within the following region: RAPSTGIHQRSIASFFTLQPGKTINGSDQKSVSSHTESQINKESKKNATQL
<b>Formulation:</b>	Liquid. Purified antibody supplied in 1x PBS buffer with 0.09% (w/v) sodium azide and 2% sucrose. <i>Note that this product is shipped as lyophilized powder to China customers.</i>
<b>Conjugation:</b>	Unconjugated
<b>Storage:</b>	Store at -20°C as received.
<b>Stability:</b>	Stable for 12 months from date of receipt.
<b>Predicted Protein Size:</b>	40 kDa
<b>Gene Name:</b>	aurora kinase A and ninein interacting protein
<b>Database Link:</b>	<a href="#">NP_076942</a> <a href="#">Entrez Gene 79000 Human</a> <a href="#">Q9H7T9</a>
<b>Background:</b>	AUNIP is required for the dynamic movement of AURKA at the centrosomes and spindle apparatus during the cell cycle.
<b>Synonyms:</b>	AIBP; C1orf135
<b>Note:</b>	Human: 100%; Pig: 86%; Horse: 86%; Rabbit: 85%; Dog: 79%; Bovine: 79%



[View online »](#)

**Product images:**

Host: Rabbit; Target Name: AUNIP; Sample Tissue: 721\_B Whole Cell lysates; Antibody Dilution: 1.0ug/ml; AUNIP is supported by BioGPS gene expression data to be expressed in 721\_B