

## Product datasheet for **TA330722**

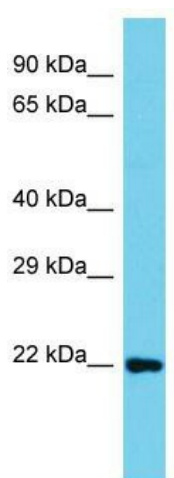
### C8orf33 Rabbit Polyclonal Antibody

#### Product data:

Product Type:	Primary Antibodies
Applications:	WB
Recommended Dilution:	WB
Reactivity:	Human
Host:	Rabbit
Isotype:	IgG
Clonality:	Polyclonal
Immunogen:	The immunogen for Anti-C8orf33 antibody is: synthetic peptide directed towards the C-terminal region of Human C8orf33. Synthetic peptide located within the following region: WREALRALRAAAYSAQVQPVDGATRKKKSQRVCRPRSIWRAKATLDMPDEE
Formulation:	Liquid. Purified antibody supplied in 1x PBS buffer with 0.09% (w/v) sodium azide and 2% sucrose. <i>Note that this product is shipped as lyophilized powder to China customers.</i>
Conjugation:	Unconjugated
Storage:	Store at -20°C as received.
Stability:	Stable for 12 months from date of receipt.
Predicted Protein Size:	24 kDa
Gene Name:	chromosome 8 open reading frame 33
Database Link:	<a href="#">NP_075568</a> <a href="#">Entrez Gene 65265 Human</a> <a href="#">Q9H7E9</a>
Background:	The function of this protein remains unknown.
Synonyms:	FLJ20989
Note:	Human: 100%



[View online »](#)

**Product images:**

Host: Rabbit; Target Name: C8orf33; Sample  
Tissue: Jurkat Whole Cell lysates; Antibody  
Dilution: 1.0ug/ml