

Product datasheet for **TA330721**

PYCR3 Rabbit Polyclonal Antibody

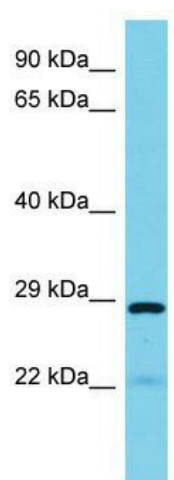
Product data:

Product Type:	Primary Antibodies
Applications:	WB
Recommended Dilution:	WB
Reactivity:	Human
Host:	Rabbit
Isotype:	IgG
Clonality:	Polyclonal
Immunogen:	The immunogen for Anti-PYCR3 antibody is: synthetic peptide directed towards the N-terminal region of Human PYCR3. Synthetic peptide located within the following region: LIRAGKVEAQHILASAPTDRNLCHFQALGCRRTTHSNQEVLQSCLLVIFAT
Formulation:	Liquid. Purified antibody supplied in 1x PBS buffer with 0.09% (w/v) sodium azide and 2% sucrose. <i>Note that this product is shipped as lyophilized powder to China customers.</i>
Conjugation:	Unconjugated
Storage:	Store at -20°C as received.
Stability:	Stable for 12 months from date of receipt.
Predicted Protein Size:	29 kDa
Gene Name:	pyrroline-5-carboxylate reductase-like
Database Link:	NP_075566 Entrez Gene 65263 Human Q53H96
Background:	The function of this protein remains unknown.
Synonyms:	PYCR3
Note:	Rat: 100%; Human: 100%; Dog: 93%; Horse: 93%; Pig: 92%; Guinea pig: 92%; Mouse: 85%; Bovine: 79%
Protein Pathways:	Arginine and proline metabolism, Metabolic pathways



[View online »](#)

Product images:



Host: Rabbit; Target Name: PYCRL; Sample
Tissue: Fetal Kidney lysates; Antibody Dilution:
1.0ug/ml