

Product datasheet for **TA330720**

MRPL44 Rabbit Polyclonal Antibody

Product data:

Product Type:	Primary Antibodies
Applications:	WB
Recommended Dilution:	WB
Reactivity:	Human
Host:	Rabbit
Isotype:	IgG
Clonality:	Polyclonal
Immunogen:	The immunogen for Anti-MRPL44 antibody is: synthetic peptide directed towards the C-terminal region of Human MRPL44. Synthetic peptide located within the following region: EGPGETVLVAEEEEAARVALRKLYGFTENRRPWNYSKPKETLRAEKSITAS
Formulation:	Liquid. Purified antibody supplied in 1x PBS buffer with 0.09% (w/v) sodium azide and 2% sucrose.
Conjugation:	Unconjugated
Storage:	Store at -20°C as received.
Stability:	Stable for 12 months from date of receipt.
Predicted Protein Size:	37 kDa
Gene Name:	mitochondrial ribosomal protein L44
Database Link:	NP_075066 Entrez Gene 65080 Human Q9H9J2
Background:	Mammalian mitochondrial ribosomal proteins are encoded by nuclear genes and help in protein synthesis within the mitochondrion. Mitochondrial ribosomes (mitoribosomes) consist of a small 28S subunit and a large 39S subunit. They have an estimated 75% protein to rRNA composition compared to prokaryotic ribosomes, where this ratio is reversed. Another difference between mammalian mitoribosomes and prokaryotic ribosomes is that the latter contain a 5S rRNA. Among different species, the proteins comprising the mitoribosome differ greatly in sequence, and sometimes in biochemical properties, which prevents easy recognition by sequence homology. This gene encodes a 39S subunit protein.

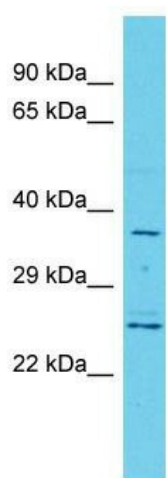


[View online »](#)

Synonyms: COXPD16; L44MT; MRP-L44

Note: Human: 100%; Dog: 85%; Rabbit: 85%; Pig: 77%; Rat: 77%

Product images:



Host: Rabbit; Target Name: MRPL44; Sample Tissue: HeLa Whole Cell lysates; Antibody Dilution: 1.0ug/ml