

Product datasheet for **TA330719**

Cdk15 Rabbit Polyclonal Antibody

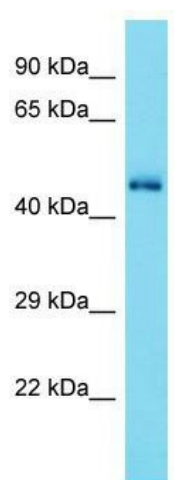
Product data:

Product Type:	Primary Antibodies
Applications:	WB
Recommended Dilution:	WB
Reactivity:	Mouse
Host:	Rabbit
Isotype:	IgG
Clonality:	Polyclonal
Immunogen:	The immunogen for Anti-Cdk15 antibody is: synthetic peptide directed towards the N-terminal region of Mouse Cdk15. Synthetic peptide located within the following region: ASFHPRGLEAASAQKLKSKRPRSNSDSFQEENLRQGLPWKSLPFGAASS
Formulation:	Liquid. Purified antibody supplied in 1x PBS buffer with 0.09% (w/v) sodium azide and 2% sucrose. <i>Note that this product is shipped as lyophilized powder to China customers.</i>
Conjugation:	Unconjugated
Storage:	Store at -20°C as received.
Stability:	Stable for 12 months from date of receipt.
Predicted Protein Size:	47 kDa
Gene Name:	cyclin-dependent kinase 15
Database Link:	NP_001028545 Entrez Gene 271697 Mouse Q3V3A1
Background:	Cdk15 is a Serine/threonine-protein kinase involved in the control of the eukaryotic cell cycle, whose activity is controlled by an associated cyclin.
Synonyms:	ALS2CR7; PFTAIRES2; PFTK2
Note:	Human: 100%; Dog: 93%; Horse: 93%; Rabbit: 92%; Rat: 86%; Mouse: 86%; Pig: 85%



[View online »](#)

Product images:



Host: Rabbit; Target Name: Cdk15; Sample
Tissue: Mouse Brain lysates; Antibody Dilution:
1.0ug/ml