

Product datasheet for **TA330717**

MRPS26 Rabbit Polyclonal Antibody

Product data:

Product Type:	Primary Antibodies
Applications:	WB
Recommended Dilution:	WB
Reactivity:	Human
Host:	Rabbit
Isotype:	IgG
Clonality:	Polyclonal
Immunogen:	The immunogen for Anti-MRPS26 antibody is: synthetic peptide directed towards the C-terminal region of Human MRPS26. Synthetic peptide located within the following region: RQALEQARKAEEVQAWAQRKEREVLQLQEEVKNFITRENLEARVEAALDS
Formulation:	Liquid. Purified antibody supplied in 1x PBS buffer with 0.09% (w/v) sodium azide and 2% sucrose.
Conjugation:	Unconjugated
Storage:	Store at -20°C as received.
Stability:	Stable for 12 months from date of receipt.
Predicted Protein Size:	24 kDa
Gene Name:	mitochondrial ribosomal protein S26
Database Link:	NP_110438 Entrez Gene 64949 Human Q9BYN8



[View online »](#)

Background:

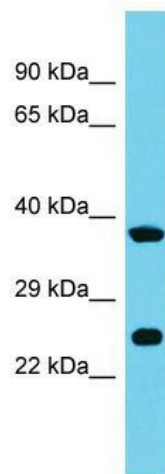
Mammalian mitochondrial ribosomal proteins are encoded by nuclear genes and help in protein synthesis within the mitochondrion. Mitochondrial ribosomes (mitoribosomes) consist of a small 28S subunit and a large 39S subunit. They have an estimated 75% protein to rRNA composition compared to prokaryotic ribosomes, where this ratio is reversed. Another difference between mammalian mitoribosomes and prokaryotic ribosomes is that the latter contain a 5S rRNA. Among different species, the proteins comprising the mitoribosome differ greatly in sequence, and sometimes in biochemical properties, which prevents easy recognition by sequence homology. This gene encodes a 28S subunit protein. This gene lies adjacent to and downstream of the gonadotropin-releasing hormone precursor gene.

Synonyms:

C20orf193; dj534B8.3; GI008; MRP-S13; MRP-S26; MRPS13; NY-BR-87; RPMS13

Note:

Human: 100%; Rabbit: 91%; Dog: 86%; Pig: 86%; Horse: 86%; Yeast: 83%; Bovine: 82%; Zebrafish: 82%

Product images:

Host: Rabbit; Target Name: MRPS26; Sample Tissue: 721_B Whole Cell lysates; Antibody Dilution: 1.0ug/ml