

Product datasheet for **TA330715**

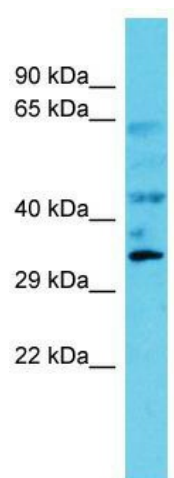
ILRUN Rabbit Polyclonal Antibody

Product data:

Product Type:	Primary Antibodies
Applications:	WB
Recommended Dilution:	WB
Reactivity:	Human
Host:	Rabbit
Isotype:	IgG
Clonality:	Polyclonal
Immunogen:	The immunogen for Anti-C6orf106 antibody is: synthetic peptide directed towards the C-terminal region of Human C6orf106. Synthetic peptide located within the following region: PAPDTWAPAPDQTEQDQNRLSQNSVNLSPSSHANNLSVVTYSKGLHGPYP
Formulation:	Liquid. Purified antibody supplied in 1x PBS buffer with 0.09% (w/v) sodium azide and 2% sucrose. <i>Note that this product is shipped as lyophilized powder to China customers.</i>
Conjugation:	Unconjugated
Storage:	Store at -20°C as received.
Stability:	Stable for 12 months from date of receipt.
Predicted Protein Size:	32 kDa
Gene Name:	chromosome 6 open reading frame 106
Database Link:	NP_077270 Entrez Gene 64771 Human Q9H6K1
Background:	The function of this protein remains unknown.
Synonyms:	dj391O22.4; FP852
Note:	Human: 100%; Rabbit: 100%; Dog: 93%; Pig: 93%; Rat: 93%; Horse: 93%; Guinea pig: 93%



[View online »](#)

Product images:

Host: Rabbit; Target Name: C6orf106; Sample
Tissue: Fetal Kidney lysates; Antibody Dilution:
1.0ug/ml