

Product datasheet for **TA330713**

C10orf84 (FAM204A) Rabbit Polyclonal Antibody

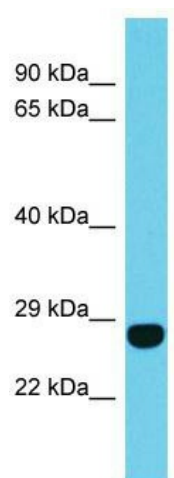
Product data:

| | |
|--------------------------------|---|
| Product Type: | Primary Antibodies |
| Applications: | WB |
| Recommended Dilution: | WB |
| Reactivity: | Human |
| Host: | Rabbit |
| Isotype: | IgG |
| Clonality: | Polyclonal |
| Immunogen: | The immunogen for Anti-FAM204A antibody is: synthetic peptide directed towards the N-terminal region of Human FAM204A. Synthetic peptide located within the following region: NSGLNLQEDKEDESIRKTEIIDFSTDEPKTETESNVNAYEECPGIPIDM |
| Formulation: | Liquid. Purified antibody supplied in 1x PBS buffer with 0.09% (w/v) sodium azide and 2% sucrose. |
| Conjugation: | Unconjugated |
| Storage: | Store at -20°C as received. |
| Stability: | Stable for 12 months from date of receipt. |
| Predicted Protein Size: | 26 kDa |
| Gene Name: | family with sequence similarity 204 member A |
| Database Link: | NP_071346 Entrez Gene 63877 Human Q9H8W3 |
| Background: | The function of this protein remains unknown. |
| Synonyms: | bA319I23.1; C10orf84 |
| Note: | Human: 100%; Dog: 79%; Horse: 79% |



[View online »](#)

Product images:



Host: Rabbit; Target Name: FAM204A; Sample
Tissue: Jurkat Whole Cell lysates; Antibody
Dilution: 1.0ug/ml