

## Product datasheet for **TA330712**

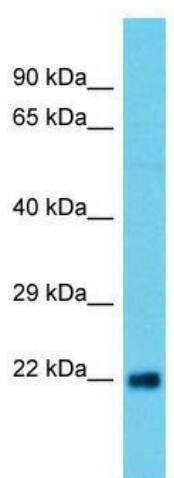
### ATG101 Rabbit Polyclonal Antibody

#### Product data:

Product Type:	Primary Antibodies
Applications:	WB
Recommended Dilution:	WB
Reactivity:	Human
Host:	Rabbit
Isotype:	IgG
Clonality:	Polyclonal
Immunogen:	The immunogen for Anti-C12orf44 antibody is: synthetic peptide directed towards the N-terminal region of Human C12orf44. Synthetic peptide located within the following region: LLHRSTGKFHYKKEGTYSIGTVGTQDVDCDFIDFTYVRVSSEELDRALRK
Formulation:	Liquid. Purified antibody supplied in 1x PBS buffer with 0.09% (w/v) sodium azide and 2% sucrose.
Conjugation:	Unconjugated
Storage:	Store at -20°C as received.
Stability:	Stable for 12 months from date of receipt.
Predicted Protein Size:	24 kDa
Gene Name:	autophagy related 101
Database Link:	<a href="#">NP_068753</a> <a href="#">Entrez Gene 60673 Human</a> <a href="#">Q9BSB4</a>
Background:	C12orf44 is an autophagy factor required for autophagosome formation.
Synonyms:	C12orf44
Note:	Dog: 100%; Pig: 100%; Rat: 100%; Horse: 100%; Human: 100%; Bovine: 100%; Rabbit: 100%; Zebrafish: 100%; Guinea pig: 100%; Mouse: 93%



[View online »](#)

**Product images:**

Host: Rabbit; Target Name: C12orf44; Sample  
Tissue: Fetal Kidney lysates; Antibody Dilution:  
1.0ug/ml