

Product datasheet for **TA330709**

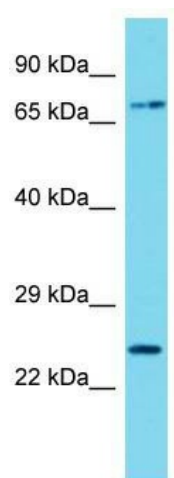
CCDC81 Rabbit Polyclonal Antibody

Product data:

Product Type:	Primary Antibodies
Applications:	WB
Recommended Dilution:	WB
Reactivity:	Human
Host:	Rabbit
Isotype:	IgG
Clonality:	Polyclonal
Immunogen:	The immunogen for Anti-CCDC81 antibody is: synthetic peptide directed towards the C-terminal region of Human CCDC81. Synthetic peptide located within the following region: DKAFERASDKLFLLDQCEKYRRCKQCQRRTSNVGESNLWPLNKFLPGSRL
Formulation:	Liquid. Purified antibody supplied in 1x PBS buffer with 0.09% (w/v) sodium azide and 2% sucrose.
Conjugation:	Unconjugated
Storage:	Store at -20°C as received.
Stability:	Stable for 12 months from date of receipt.
Predicted Protein Size:	75 kDa
Gene Name:	coiled-coil domain containing 81
Database Link:	NP_001149946 Entrez Gene 60494 Human Q6ZN84
Background:	The function of this protein remains unknown.
Synonyms:	FLJ16339; FLJ23514
Note:	Dog: 100%; Pig: 100%; Human: 100%; Rabbit: 100%; Bovine: 93%; Rat: 92%; Horse: 85%; Mouse: 85%; Guinea pig: 79%



[View online »](#)

Product images:

Host: Rabbit; Target Name: CCDC81; Sample
Tissue: HeLa Whole cell lysates; Antibody Dilution:
1.0ug/ml