

## Product datasheet for **TA330707**

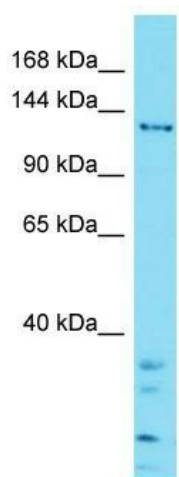
### ZSWIM5 Rabbit Polyclonal Antibody

#### Product data:

Product Type:	Primary Antibodies
Applications:	WB
Recommended Dilution:	WB
Reactivity:	Human
Host:	Rabbit
Isotype:	IgG
Clonality:	Polyclonal
Immunogen:	The immunogen for Anti-ZSWIM5 antibody is: synthetic peptide directed towards the C-terminal region of Human ZSWIM5. Synthetic peptide located within the following region: ISPRHYGEFIEFLSKARETFLLPQDGHLLQFAQFIDNLKQIYKGKKKLMLL
Formulation:	Liquid. Purified antibody supplied in 1x PBS buffer with 0.09% (w/v) sodium azide and 2% sucrose.
Conjugation:	Unconjugated
Storage:	Store at -20°C as received.
Stability:	Stable for 12 months from date of receipt.
Predicted Protein Size:	130 kDa
Gene Name:	zinc finger SWIM-type containing 5
Database Link:	<a href="#">NP_065934</a> <a href="#">Entrez Gene 57643 Human</a> <a href="#">Q9P217</a>
Background:	The function of this protein remains unknown.
Synonyms:	KIAA1511
Note:	Dog: 100%; Pig: 100%; Rat: 100%; Horse: 100%; Human: 100%; Mouse: 100%; Bovine: 100%; Rabbit: 100%; Zebrafish: 100%; Guinea pig: 100%



[View online »](#)

**Product images:**

Host: Rabbit; Target Name: ZSWIM5; Sample  
Tissue: Jurkat Whole Cell lysates; Antibody  
Dilution: 1.0ug/ml