

Product datasheet for **TA330704**

Ccdc47 Rabbit Polyclonal Antibody

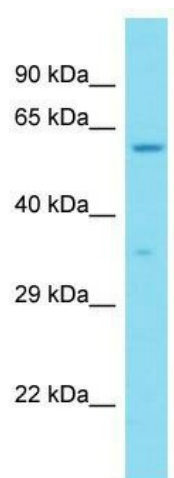
Product data:

| | |
|-------------------------|--|
| Product Type: | Primary Antibodies |
| Applications: | WB |
| Recommended Dilution: | WB |
| Reactivity: | Mouse |
| Host: | Rabbit |
| Isotype: | IgG |
| Clonality: | Polyclonal |
| Immunogen: | The immunogen for Anti-Ccdc47 antibody is: synthetic peptide directed towards the C-terminal region of Mouse Ccdc47. Synthetic peptide located within the following region: ADKNRARVEENFLKLTHVQRQEAAQSRREEKKRAEKERIMNEEDPEKQRR |
| Formulation: | Liquid. Purified antibody supplied in 1x PBS buffer with 0.09% (w/v) sodium azide and 2% sucrose. <i>Note that this product is shipped as lyophilized powder to China customers.</i> |
| Conjugation: | Unconjugated |
| Storage: | Store at -20°C as received. |
| Stability: | Stable for 12 months from date of receipt. |
| Predicted Protein Size: | 53 kDa |
| Gene Name: | coiled-coil domain containing 47 |
| Database Link: | NP_080285 Entrez Gene 67163 Mouse Q9D024 |
| Background: | The function of this protein remains unknown. |
| Synonyms: | GK001; MSTP041 |
| Note: | Dog: 100%; Pig: 100%; Rat: 100%; Horse: 100%; Human: 100%; Mouse: 100%; Bovine: 100%; Rabbit: 100%; Guinea pig: 100%; Zebrafish: 93% |



[View online »](#)

Product images:



Host: Rabbit; Target Name: Ccdc47; Sample
Tissue: Mouse Liver lysates; Antibody Dilution:
1.0ug/ml