

Product datasheet for **TA330702**

STOX2 Rabbit Polyclonal Antibody

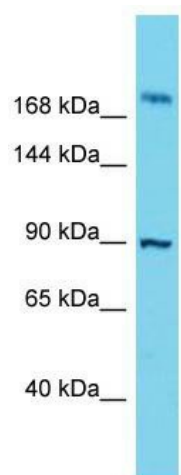
Product data:

Product Type:	Primary Antibodies
Applications:	WB
Recommended Dilution:	WB
Reactivity:	Human
Host:	Rabbit
Isotype:	IgG
Clonality:	Polyclonal
Immunogen:	The immunogen for Anti-STOX2 antibody is: synthetic peptide directed towards the C-terminal region of Human STOX2. Synthetic peptide located within the following region: NKNTEEEKNREDVGTMQWLLEREKERDLQRKFEKNLTLAPKETDSSSNQ
Formulation:	Liquid. Purified antibody supplied in 1x PBS buffer with 0.09% (w/v) sodium azide and 2% sucrose.
Conjugation:	Unconjugated
Storage:	Store at -20°C as received.
Stability:	Stable for 12 months from date of receipt.
Predicted Protein Size:	94 kDa
Gene Name:	storkhead box 2
Database Link:	NP_064610 Entrez Gene 56977 Human Q9P2F5
Background:	The function of this protein remains unknown.
Synonyms:	DKFZp762K222
Note:	Human: 100%; Pig: 93%; Rat: 93%; Horse: 93%; Dog: 91%; Mouse: 86%; Bovine: 86%; Rabbit: 86%



[View online »](#)

Product images:



Host: Rabbit; Target Name: STOX2; Sample
Tissue: ACHN Whole Cell lysates; Antibody
Dilution: 1.0ug/ml