

Product datasheet for **TA330701**

C11orf75 (SMCO4) Rabbit Polyclonal Antibody

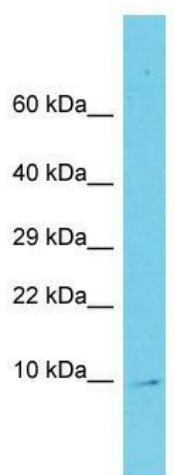
Product data:

Product Type:	Primary Antibodies
Applications:	WB
Recommended Dilution:	WB
Reactivity:	Human
Host:	Rabbit
Isotype:	IgG
Clonality:	Polyclonal
Immunogen:	The immunogen for Anti-C11orf75 antibody is: synthetic peptide directed towards the N-terminal region of Human C11orf75. Synthetic peptide located within the following region: KPKKETS KDKKER KQAMQEARQQITTVLPTLAVVLLIVFVYVATRPT
Formulation:	Liquid. Purified antibody supplied in 1x PBS buffer with 0.09% (w/v) sodium azide and 2% sucrose. <i>Note that this product is shipped as lyophilized powder to China customers.</i>
Conjugation:	Unconjugated
Storage:	Store at -20°C as received.
Stability:	Stable for 12 months from date of receipt.
Predicted Protein Size:	6 kDa
Gene Name:	single-pass membrane protein with coiled-coil domains 4
Database Link:	NP_064564 Entrez Gene 56935 Human Q9NRQ5
Background:	The function of this protein remains unknown.
Synonyms:	C11orf75; FN5
Note:	Pig: 100%; Rat: 100%; Human: 100%; Mouse: 100%; Rabbit: 100%; Guinea pig: 100%; Bovine: 93%; Yeast: 79%
Protein Families:	Transmembrane



[View online »](#)

Product images:



Host: Rabbit; Target Name: C11orf75; Sample
Tissue: Fetal Liver lysates; Antibody Dilution:
1.0ug/ml