

Product datasheet for **TA330700**

C8orf44 Rabbit Polyclonal Antibody

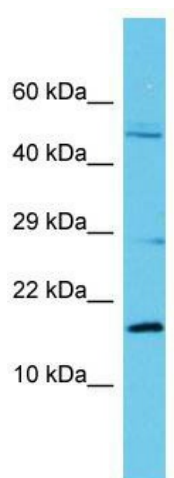
Product data:

Product Type:	Primary Antibodies
Applications:	WB
Recommended Dilution:	WB
Reactivity:	Human
Host:	Rabbit
Isotype:	IgG
Clonality:	Polyclonal
Immunogen:	The immunogen for Anti-C8orf44 antibody is: synthetic peptide directed towards the N-terminal region of Human C8orf44. Synthetic peptide located within the following region: HWKGRARWLMPPVIPALWEAKAGRSPEVRSSKPAWPTWRNPIFTKNTKISQ
Formulation:	Liquid. Purified antibody supplied in 1x PBS buffer with 0.09% (w/v) sodium azide and 2% sucrose.
Conjugation:	Unconjugated
Storage:	Store at -20°C as received.
Stability:	Stable for 12 months from date of receipt.
Predicted Protein Size:	18 kDa
Gene Name:	chromosome 8 open reading frame 44
Database Link:	NP_062553 Entrez Gene 56260 Human
Background:	The function of this protein remains unknown.
Synonyms:	FLJ11267
Note:	Human: 100%



[View online »](#)

Product images:



Host: Rabbit; Target Name: C8orf44; Sample
Tissue: Fetal Kidney lysates; Antibody Dilution:
1.0ug/ml