

Product datasheet for **TA330699**

SERTAD4 Rabbit Polyclonal Antibody

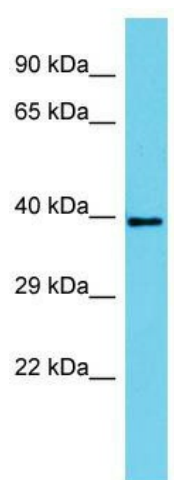
Product data:

Product Type:	Primary Antibodies
Applications:	WB
Recommended Dilution:	WB
Reactivity:	Human
Host:	Rabbit
Isotype:	IgG
Clonality:	Polyclonal
Immunogen:	The immunogen for Anti-SERTAD4 antibody is: synthetic peptide directed towards the C-terminal region of Human SERTAD4. Synthetic peptide located within the following region: VGNDLAFECKGQFYDYFETGYNERNNVNESWKSLRKKEASPPSNKLCCS
Formulation:	Liquid. Purified antibody supplied in 1x PBS buffer with 0.09% (w/v) sodium azide and 2% sucrose.
Conjugation:	Unconjugated
Storage:	Store at -20°C as received.
Stability:	Stable for 12 months from date of receipt.
Predicted Protein Size:	39 kDa
Gene Name:	SERTA domain containing 4
Database Link:	NP_062551 Entrez Gene 56256 Human Q9NUC0
Background:	The function of this protein remains unknown.
Synonyms:	DJ667H12.2
Note:	Human: 100%; Dog: 86%; Rat: 86%; Horse: 86%; Bovine: 86%; Rabbit: 83%; Pig: 80%; Guinea pig: 80%



[View online »](#)

Product images:



Host: Rabbit; Target Name: SERTAD4; Sample
Tissue: HepG2 Whole Cell lysates; Antibody
Dilution: 1.0ug/ml