

## Product datasheet for **TA330698**

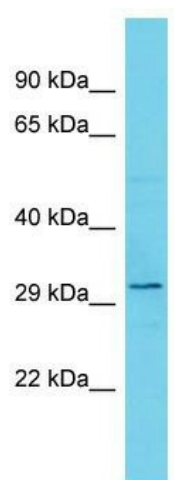
### TEX13B Rabbit Polyclonal Antibody

#### Product data:

Product Type:	Primary Antibodies
Applications:	WB
Recommended Dilution:	WB
Reactivity:	Human
Host:	Rabbit
Isotype:	IgG
Clonality:	Polyclonal
Immunogen:	The immunogen for Anti-TEX13B antibody is: synthetic peptide directed towards the N-terminal region of Human TEX13B. Synthetic peptide located within the following region: LQGFAKLHRSAALVLASNLTELKEQQEMECNEATFQLQLTETSLAEVQRE
Formulation:	Liquid. Purified antibody supplied in 1x PBS buffer with 0.09% (w/v) sodium azide and 2% sucrose.
Conjugation:	Unconjugated
Storage:	Store at -20°C as received.
Stability:	Stable for 12 months from date of receipt.
Predicted Protein Size:	33 kDa
Gene Name:	testis expressed 13B
Database Link:	<a href="#">NP_112563</a> <a href="#">Entrez Gene 56156 Human</a> <a href="#">Q9BXU2</a>
Background:	This gene is similar to a mouse gene that is expressed in the testis.
Synonyms:	TGC3B; TSGA5
Note:	Human: 100%; Mouse: 83%


[View online »](#)

## Product images:



Host: Rabbit; Target Name: TEX13B; Sample  
Tissue: OVCAR-3 Whole Cell lysates; Antibody  
Dilution: 1.0ug/ml