

Product datasheet for **TA330697**

UBFD1 Rabbit Polyclonal Antibody

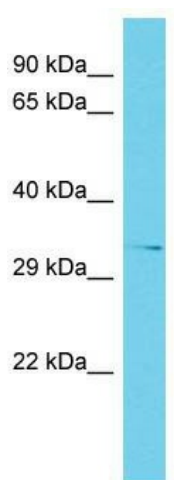
Product data:

Product Type:	Primary Antibodies
Applications:	WB
Recommended Dilution:	WB
Reactivity:	Human
Host:	Rabbit
Isotype:	IgG
Clonality:	Polyclonal
Immunogen:	The immunogen for Anti-UBFD1 antibody is: synthetic peptide directed towards the C-terminal region of Human UBFD1. Synthetic peptide located within the following region: LSGMYNKSGGKVRLETFKLEQDQLWIGTKERTEKLPMGSIKNVWSEPIEGH
Formulation:	Liquid. Purified antibody supplied in 1x PBS buffer with 0.09% (w/v) sodium azide and 2% sucrose.
Conjugation:	Unconjugated
Storage:	Store at -20°C as received.
Stability:	Stable for 12 months from date of receipt.
Predicted Protein Size:	33 kDa
Gene Name:	ubiquitin family domain containing 1
Database Link:	NP_061989 Entrez Gene 56061 Human O14562
Background:	UBFD1 may play a role as NF-kappa-B regulator.
Synonyms:	UBPH
Note:	Dog: 100%; Pig: 100%; Rat: 100%; Horse: 100%; Human: 100%; Mouse: 100%; Bovine: 100%; Rabbit: 100%; Guinea pig: 100%; Zebrafish: 93%
Protein Families:	Druggable Genome



[View online »](#)

Product images:



Host: Rabbit; Target Name: UBFD1; Sample
Tissue: Fetal Kidney lysates; Antibody Dilution:
1.0ug/ml