

## Product datasheet for **TA330695**

### DAP13 (NDUFA12) Rabbit Polyclonal Antibody

#### Product data:

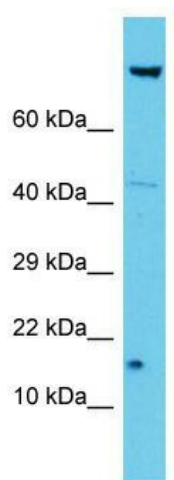
Product Type:	Primary Antibodies
Applications:	WB
Recommended Dilution:	WB
Reactivity:	Human
Host:	Rabbit
Isotype:	IgG
Clonality:	Polyclonal
Immunogen:	The immunogen for Anti-NDUFA12 antibody is: synthetic peptide directed towards the N-terminal region of Human NDUFA12. Synthetic peptide located within the following region: VLKRGLQQITGHGGLRGLRVFFRTNDAKVGTLVGEDKYGNKYEDNKQF
Formulation:	Liquid. Purified antibody supplied in 1x PBS buffer with 0.09% (w/v) sodium azide and 2% sucrose. <i>Note that this product is shipped as lyophilized powder to China customers.</i>
Conjugation:	Unconjugated
Storage:	Store at -20°C as received.
Stability:	Stable for 12 months from date of receipt.
Predicted Protein Size:	15 kDa
Gene Name:	NADH:ubiquinone oxidoreductase subunit A12
Database Link:	<a href="#">NP_061326</a> <a href="#">Entrez Gene 55967 Human</a> <a href="#">Q9UI09</a>
Background:	This gene encodes a protein which is part of mitochondrial complex 1, part of the oxidative phosphorylation system in mitochondria. Complex 1 transfers electrons to ubiquinone from NADH which establishes a proton gradient for the generation of ATP. Mutations in this gene are associated with Leigh syndrome due to mitochondrial complex 1 deficiency. Pseudogenes of this gene are located on chromosomes 5 and 13. Alternative splicing results in multiple transcript variants.
Synonyms:	B17.2; DAP13



[View online »](#)

**Note:** Dog: 100%; Pig: 100%; Rat: 100%; Horse: 100%; Human: 100%; Mouse: 100%; Sheep: 100%; Bovine: 100%; Zebrafish: 100%; Guinea pig: 100%; Yeast: 91%

**Product images:**



Host: Rabbit; Target Name: NDUFA12; Sample Tissue: Jurkat Whole Cell lysates; Antibody Dilution: 1.0ug/ml