

Product datasheet for **TA330694**

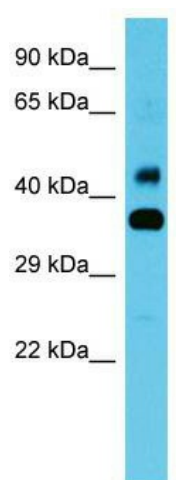
CBWD1 Rabbit Polyclonal Antibody

Product data:

Product Type:	Primary Antibodies
Applications:	WB
Recommended Dilution:	WB
Reactivity:	Human
Host:	Rabbit
Isotype:	IgG
Clonality:	Polyclonal
Immunogen:	The immunogen for Anti-CBWD1 antibody is: synthetic peptide directed towards the N-terminal region of Human CBWD1. Synthetic peptide located within the following region: GAVASMFWDVAELGSDIYLDGIITIVDSKYGLKHLTEEKPDGLINEATRQ
Formulation:	Liquid. Purified antibody supplied in 1x PBS buffer with 0.09% (w/v) sodium azide and 2% sucrose. <i>Note that this product is shipped as lyophilized powder to China customers.</i>
Conjugation:	Unconjugated
Storage:	Store at -20°C as received.
Stability:	Stable for 12 months from date of receipt.
Predicted Protein Size:	39 kDa
Gene Name:	COBW domain containing 1
Database Link:	NP_001138827 Entrez Gene 55871 Human Q9BRT8
Background:	The function of this protein remains unknown.
Synonyms:	COBP
Note:	Pig: 100%; Rat: 100%; Human: 100%; Mouse: 100%; Guinea pig: 100%; Dog: 93%; Horse: 93%; Bovine: 93%; Rabbit: 93%; Zebrafish: 85%; Yeast: 79%



[View online »](#)

Product images:


Host: Rabbit; Target Name: CBWD1; Sample
Tissue: Fetal Heart lysates; Antibody Dilution:
1.0ug/ml