

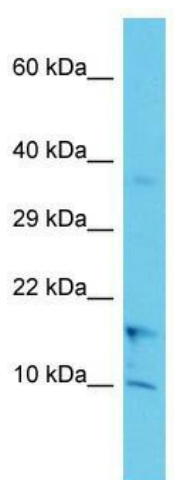
Product datasheet for TA330693

COA1 Rabbit Polyclonal Antibody

Product data:

Product Type:	Primary Antibodies
Applications:	WB
Recommended Dilution:	WB
Reactivity:	Human
Host:	Rabbit
Isotype:	IgG
Clonality:	Polyclonal
Immunogen:	The immunogen for Anti-COA1 antibody is: synthetic peptide directed towards the C-terminal region of Human COA1. Synthetic peptide located within the following region: KSEGLLYVHSSRGGPFQRWHLDEVFLELKDGQQIPVFKLSGENGDEVKKE
Formulation:	Liquid. Purified antibody supplied in 1x PBS buffer with 0.09% (w/v) sodium azide and 2% sucrose.
Conjugation:	Unconjugated
Storage:	Store at -20°C as received.
Stability:	Stable for 12 months from date of receipt.
Predicted Protein Size:	16 kDa
Gene Name:	cytochrome c oxidase assembly factor 1 homolog
Database Link:	NP_060694 Entrez Gene 55744 Human Q9GZY4
Background:	The function of this protein remains unknown.
Synonyms:	C7orf44; MITRAC15
Note:	Human: 100%
Protein Families:	Transmembrane


[View online »](#)

Product images:

Host: Rabbit; Target Name: COA1; Sample Tissue: Jurkat Whole Cell lysates; Antibody Dilution: 1.0ug/ml; There is BioGPS gene expression data showing that COA1 is expressed in Jurkat