

Product datasheet for **TA330692**

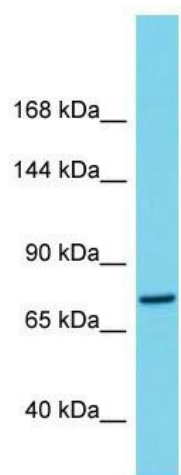
C1orf112 Rabbit Polyclonal Antibody

Product data:

Product Type:	Primary Antibodies
Applications:	WB
Recommended Dilution:	WB
Reactivity:	Human
Host:	Rabbit
Isotype:	IgG
Clonality:	Polyclonal
Immunogen:	The immunogen for Anti-C1orf112 antibody is: synthetic peptide directed towards the C-terminal region of Human C1orf112. Synthetic peptide located within the following region: TEAAKVERVKQEKGIFWEPFANVTVEEAKRSSLQPYAKRARQEFPWEEY
Formulation:	Liquid. Purified antibody supplied in 1x PBS buffer with 0.09% (w/v) sodium azide and 2% sucrose. <i>Note that this product is shipped as lyophilized powder to China customers.</i>
Conjugation:	Unconjugated
Storage:	Store at -20°C as received.
Stability:	Stable for 12 months from date of receipt.
Predicted Protein Size:	78 kDa
Gene Name:	chromosome 1 open reading frame 112
Database Link:	NP_060656 Entrez Gene 55732 Human Q9NSG2
Background:	The function of this protein remains unknown.
Synonyms:	RP1-97P20.1
Note:	Human: 100%; Pig: 86%; Dog: 85%; Horse: 85%; Bovine: 77%
Protein Families:	Druggable Genome



[View online »](#)

Product images:

Host: Rabbit; Target Name: C1orf112; Sample
Tissue: THP-1 Whole Cell lysates; Antibody
Dilution: 1.0ug/ml