

## Product datasheet for TA330689

### C9orf86 (RABL6) Rabbit Polyclonal Antibody

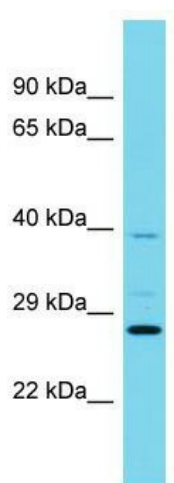
#### Product data:

Product Type:	Primary Antibodies
Applications:	WB
Recommended Dilution:	WB
Reactivity:	Human
Host:	Rabbit
Isotype:	IgG
Clonality:	Polyclonal
Immunogen:	The immunogen for Anti-RABL6 antibody is: synthetic peptide directed towards the N-terminal region of Human RABL6. Synthetic peptide located within the following region: PFVEEYIPTQEIQVTSIHWSYKTTDDIVKVEVWDVVDKGKCKKRGDGLKM
Formulation:	Liquid. Purified antibody supplied in 1x PBS buffer with 0.09% (w/v) sodium azide and 2% sucrose.
Conjugation:	Unconjugated
Storage:	Store at -20°C as received.
Stability:	Stable for 12 months from date of receipt.
Predicted Protein Size:	35 kDa
Gene Name:	RAB, member RAS oncogene family-like 6
Database Link:	<a href="#">NP_001167460</a> <a href="#">Entrez Gene 55684 Human</a> <a href="#">Q3YEC7</a>
Background:	This gene encodes a member of the Ras superfamily of small GTPases. The encoded protein binds to both GTP and GDP and may play a role in cell growth and survival. Overexpression of this gene may play a role in breast cancer tumorigenesis, and pseudogenes of this gene are located on the long arm of chromosome 2 and the short arm of chromosome 18. Alternatively spliced transcript variants encoding multiple isoforms have been observed for this gene.
Synonyms:	C9orf86; PARF; pp8875; RBEL1


[View online »](#)

**Note:** Horse: 100%; Human: 100%; Mouse: 100%; Bovine: 100%; Rabbit: 100%; Pig: 93%; Rat: 92%; Dog: 85%

## Product images:



Host: Rabbit; Target Name: RABL6; Sample Tissue: Jurkat Whole Cell lysates; Antibody Dilution: 1.0ug/ml; RABL6 is supported by BioGPS gene expression data to be expressed in Jurkat