

## Product datasheet for **TA330688**

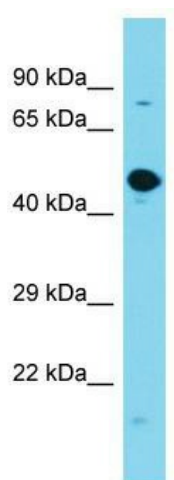
### **C14orf118 (GPATCH2L) Rabbit Polyclonal Antibody**

#### **Product data:**

Product Type:	Primary Antibodies
Applications:	WB
Recommended Dilution:	WB
Reactivity:	Human
Host:	Rabbit
Isotype:	IgG
Clonality:	Polyclonal
Immunogen:	The immunogen for Anti-GPATCH2L antibody is: synthetic peptide directed towards the middle region of Human GPATCH2L. Synthetic peptide located within the following region: SRWKENTPWTSSGHGLCESAENRTFLSKTGRKERMECETDEQKQGSDENM
Formulation:	Liquid. Purified antibody supplied in 1x PBS buffer with 0.09% (w/v) sodium azide and 2% sucrose.
Conjugation:	Unconjugated
Storage:	Store at -20°C as received.
Stability:	Stable for 12 months from date of receipt.
Predicted Protein Size:	54 kDa
Gene Name:	G-patch domain containing 2 like
Database Link:	<a href="#">NP_060396</a> <a href="#">Entrez Gene 55668 Human</a> <a href="#">Q9NWQ4</a>
Background:	The function of this protein remains unknown.
Synonyms:	C14orf118
Note:	Pig: 100%; Rat: 100%; Human: 100%; Guinea pig: 100%; Dog: 93%; Horse: 93%; Bovine: 93%; Rabbit: 85%; Mouse: 82%


[View online »](#)

## Product images:



Host: Rabbit; Target Name: GPATCH2L; Sample  
Tissue: Fetal Brain lysates; Antibody Dilution:  
1.0ug/ml