

Product datasheet for **TA330686**

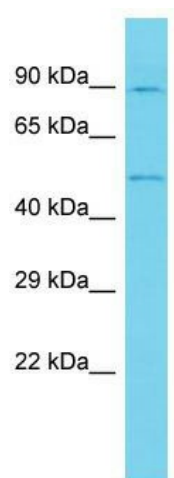
ANKRD10 Rabbit Polyclonal Antibody

Product data:

Product Type:	Primary Antibodies
Applications:	WB
Recommended Dilution:	WB
Reactivity:	Human
Host:	Rabbit
Isotype:	IgG
Clonality:	Polyclonal
Immunogen:	The immunogen for Anti-ANKRD10 antibody is: synthetic peptide directed towards the C-terminal region of Human ANKRD10. Synthetic peptide located within the following region: SQGSLCISGTEEPEKTLRANPELCGSLHLNGSPSSCIASRPSWVEDIGDN
Formulation:	Liquid. Purified antibody supplied in 1x PBS buffer with 0.09% (w/v) sodium azide and 2% sucrose. <i>Note that this product is shipped as lyophilized powder to China customers.</i>
Conjugation:	Unconjugated
Storage:	Store at -20°C as received.
Stability:	Stable for 12 months from date of receipt.
Predicted Protein Size:	44 kDa
Gene Name:	ankyrin repeat domain 10
Database Link:	NP_060134 Entrez Gene 55608 Human Q9NXR5
Background:	The function of this protein remains unknown.
Synonyms:	DKFZp686B07190; FLJ20093
Note:	Human: 100%



[View online »](#)

Product images:

Host: Rabbit; Target Name: ANKRD10; Sample
Tissue: U937 Whole Cell lysates; Antibody
Dilution: 1.0ug/ml