

Product datasheet for TA330685

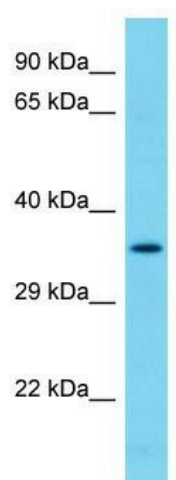
NDUFAF7 Rabbit Polyclonal Antibody

Product data:

Product Type:	Primary Antibodies
Applications:	WB
Recommended Dilution:	WB
Reactivity:	Human
Host:	Rabbit
Isotype:	IgG
Clonality:	Polyclonal
Immunogen:	The immunogen for Anti-NDUFAF7 antibody is: synthetic peptide directed towards the C-terminal region of Human NDUFAF7. Synthetic peptide located within the following region: LGPIKQHTFLKNMGIDVRLKVLLDKSNEPSVRQQLQGYDMLMNPCKMGE
Formulation:	Liquid. Purified antibody supplied in 1x PBS buffer with 0.09% (w/v) sodium azide and 2% sucrose.
Conjugation:	Unconjugated
Storage:	Store at -20°C as received.
Stability:	Stable for 12 months from date of receipt.
Predicted Protein Size:	37 kDa
Gene Name:	NADH:ubiquinone oxidoreductase complex assembly factor 7
Database Link:	NP_001077415 Entrez Gene 55471 Human Q7L592
Background:	The function of this protein remains unknown.
Synonyms:	C2orf56; MidA; PRO1853
Note:	Human: 100%; Pig: 93%; Guinea pig: 93%; Dog: 91%; Mouse: 83%; Rat: 79%; Horse: 79%; Rabbit: 79%


[View online »](#)

Product images:



Host: Rabbit; Target Name: NDUFAF7; Sample
Tissue: 293T Whole Cell lysates; Antibody
Dilution: 1.0ug/ml