

## Product datasheet for **TA330683**

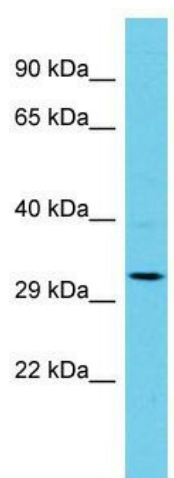
### AP1AR Rabbit Polyclonal Antibody

#### Product data:

Product Type:	Primary Antibodies
Applications:	WB
Recommended Dilution:	WB
Reactivity:	Human
Host:	Rabbit
Isotype:	IgG
Clonality:	Polyclonal
Immunogen:	The immunogen for Anti-AP1AR antibody is: synthetic peptide directed towards the C-terminal region of Human AP1AR. Synthetic peptide located within the following region: DSTSLDLEWEDEEGMNRMLPMRERSKTEEDILRAALKYSNKKTGSNPTSA
Formulation:	Liquid. Purified antibody supplied in 1x PBS buffer with 0.09% (w/v) sodium azide and 2% sucrose.
Conjugation:	Unconjugated
Storage:	Store at -20°C as received.
Stability:	Stable for 12 months from date of receipt.
Predicted Protein Size:	34 kDa
Gene Name:	adaptor related protein complex 1 associated regulatory protein
Database Link:	<a href="#">NP_061039</a> <a href="#">Entrez Gene 55435 Human</a> <a href="#">Q63HQ0</a>
Background:	AP1AR is necessary for AP-1 dependent transport between the trans-Golgi network and endosomes. It regulates the membrane association of AP1G1/Gamma1-adaptin, one of the subunits of the AP-1 adapter complex. The direct interaction with AP1G1/Gamma1-adaptin attenuates the release of the AP-1 complex from membranes.
Synonyms:	2C18; C4orf16; gamma-BAR; GBAR; PRO0971
Note:	Human: 100%; Dog: 93%; Pig: 93%; Bovine: 93%; Mouse: 86%; Rabbit: 86%; Horse: 83%; Rat: 77%


[View online »](#)

## Product images:



Host: Rabbit; Target Name: AP1AR; Sample  
Tissue: Jurkat Whole Cell lysates; Antibody  
Dilution: 1.0ug/ml