

## Product datasheet for **TA330682**

### **C17orf85 (NCBP3) Rabbit Polyclonal Antibody**

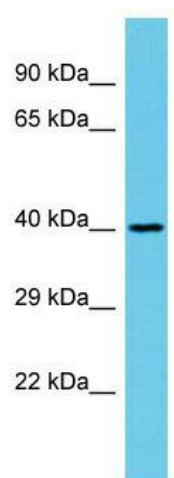
#### **Product data:**

|                                |   |
|--------------------------------|---|
| <b>Product Type:</b>           | Primary Antibodies  |
| <b>Applications:</b>           | WB  |
| <b>Recommended Dilution:</b>   | WB  |
| <b>Reactivity:</b>             | Human   |
| <b>Host:</b>                   | Rabbit  |
| <b>Isotype:</b>                | IgG   |
| <b>Clonality:</b>              | Polyclonal  |
| <b>Immunogen:</b>              | The immunogen for Anti-C17orf85 antibody is: synthetic peptide directed towards the C-terminal region of Human C17orf85. Synthetic peptide located within the following region: PSSDVHSRLGVPRQDSKGLYADTREKKSGLNLWTRLGSAPKTKEKNTKKVD |
| <b>Formulation:</b>            | Liquid. Purified antibody supplied in 1x PBS buffer with 0.09% (w/v) sodium azide and 2% sucrose.<br><i>Note that this product is shipped as lyophilized powder to China customers.</i>   |
| <b>Conjugation:</b>            | Unconjugated  |
| <b>Storage:</b>                | Store at -20°C as received.   |
| <b>Stability:</b>              | Stable for 12 months from date of receipt.  |
| <b>Predicted Protein Size:</b> | 38 kDa  |
| <b>Gene Name:</b>              | nuclear cap binding subunit 3   |
| <b>Database Link:</b>          | <a href="#">NP_061023</a><br><a href="#">Entrez Gene 55421 Human</a><br><a href="#">Q53F19</a>  |
| <b>Background:</b>             | The function of this protein remains unknown.   |
| <b>Synonyms:</b>               | ELG; HSA277841  |
| <b>Note:</b>                   | Dog: 100%; Human: 100%; Rabbit: 100%; Pig: 93%; Rat: 93%; Horse: 93%; Mouse: 93%; Bovine: 93%; Guinea pig: 79%  |



[View online »](#)

## Product images:



Host: Rabbit; Target Name: C17orf85; Sample  
Tissue: Fetal Kidney lysates; Antibody Dilution:  
1.0ug/ml