

## Product datasheet for **TA330681**

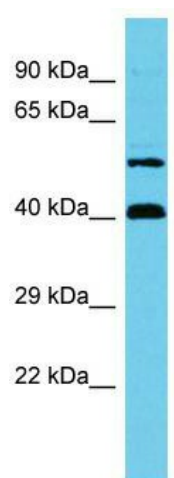
### C17orf85 (NCBP3) Rabbit Polyclonal Antibody

#### Product data:

Product Type:	Primary Antibodies
Applications:	WB
Recommended Dilution:	WB
Reactivity:	Human
Host:	Rabbit
Isotype:	IgG
Clonality:	Polyclonal
Immunogen:	The immunogen for Anti-C17orf85 antibody is: synthetic peptide directed towards the C-terminal region of Human C17orf85. Synthetic peptide located within the following region: RLGSAPKTKKNTKKVDHRAPGAEEDDSELQRAWGALIKEKEQSRQKKSR
Formulation:	Liquid. Purified antibody supplied in 1x PBS buffer with 0.09% (w/v) sodium azide and 2% sucrose. <i>Note that this product is shipped as lyophilized powder to China customers.</i>
Conjugation:	Unconjugated
Storage:	Store at -20°C as received.
Stability:	Stable for 12 months from date of receipt.
Predicted Protein Size:	38 kDa
Gene Name:	nuclear cap binding subunit 3
Database Link:	<a href="#">NP_061023</a> <a href="#">Entrez Gene 55421 Human</a> <a href="#">Q53F19</a>
Background:	The function of this protein remains unknown.
Synonyms:	ELG; HSA277841
Note:	Dog: 100%; Pig: 100%; Rat: 100%; Horse: 100%; Human: 100%; Bovine: 100%; Rabbit: 100%; Guinea pig: 100%; Mouse: 93%



[View online »](#)

**Product images:**

Host: Rabbit; Target Name: C17orf85; Sample Tissue: Jurkat Whole Cell lysates; Antibody Dilution: 1.0ug/ml; C17orf85 is supported by BioGPS gene expression data to be expressed in Jurkat