

Product datasheet for **TA330680**

ABHD10 Rabbit Polyclonal Antibody

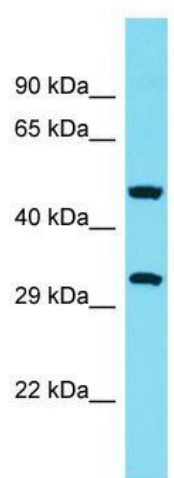
Product data:

Product Type:	Primary Antibodies
Applications:	WB
Recommended Dilution:	WB
Reactivity:	Human
Host:	Rabbit
Isotype:	IgG
Clonality:	Polyclonal
Immunogen:	The immunogen for Anti-ABHD10 antibody is: synthetic peptide directed towards the middle region of Human ABHD10. Synthetic peptide located within the following region: CIRFDYSGVGSSDGNSEESTLGKWRKDVLSIIDDLADGPQILVGSSLGGW
Formulation:	Liquid. Purified antibody supplied in 1x PBS buffer with 0.09% (w/v) sodium azide and 2% sucrose. <i>Note that this product is shipped as lyophilized powder to China customers.</i>
Conjugation:	Unconjugated
Storage:	Store at -20°C as received.
Stability:	Stable for 12 months from date of receipt.
Predicted Protein Size:	33 kDa
Gene Name:	abhydrolase domain containing 10
Database Link:	NP_060864 Entrez Gene 55347 Human Q9NUJ1
Background:	This gene encodes a mitochondrially-localized enzyme that acts in liver cells as a hydrolase. The encoded protein removes glucuronide from mycophenolic acid acyl-glucuronide. There is a pseudogene for this gene on chromosome 6. Alternative splicing results in multiple transcript variants.
Synonyms:	FLJ11342
Note:	Human: 100%; Rabbit: 86%



[View online »](#)

Product images:



Host: Rabbit; Target Name: ABHD10; Sample
Tissue: THP-1 Whole Cell lysates; Antibody
Dilution: 1.0ug/ml