

Product datasheet for **TA330679**

SHFL Rabbit Polyclonal Antibody

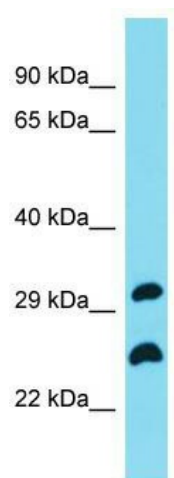
Product data:

Product Type:	Primary Antibodies
Applications:	WB
Recommended Dilution:	WB
Reactivity:	Human
Host:	Rabbit
Isotype:	IgG
Clonality:	Polyclonal
Immunogen:	The immunogen for Anti-C19orf66 antibody is: synthetic peptide directed towards the N-terminal region of Human C19orf66. Synthetic peptide located within the following region: GVELEKSVRRLREKFHGKVSSKKAGALMRKFGSDHTGVGRSIVYGVKQKD
Formulation:	Liquid. Purified antibody supplied in 1x PBS buffer with 0.09% (w/v) sodium azide and 2% sucrose. <i>Note that this product is shipped as lyophilized powder to China customers.</i>
Conjugation:	Unconjugated
Storage:	Store at -20°C as received.
Stability:	Stable for 12 months from date of receipt.
Predicted Protein Size:	32 kDa
Gene Name:	chromosome 19 open reading frame 66
Database Link:	NP_060851 Entrez Gene 55337 Human Q9NUL5
Background:	The function of this protein remains unknown.
Synonyms:	FLJ11286; FLJ40743
Note:	Dog: 100%; Horse: 100%; Human: 100%; Bovine: 100%; Rat: 93%; Mouse: 93%; Rabbit: 93%; Pig: 92%; Guinea pig: 79%



[View online »](#)

Product images:



Host: Rabbit; Target Name: C19orf66; Sample Tissue: COLO205 Whole Cell lysates; Antibody Dilution: 1.0ug/ml