

Product datasheet for **TA330676**

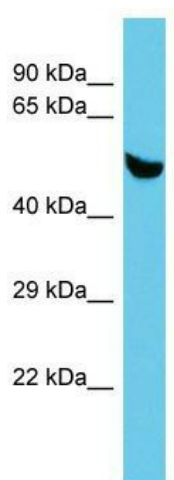
C5orf22 Rabbit Polyclonal Antibody

Product data:

Product Type:	Primary Antibodies
Applications:	WB
Recommended Dilution:	WB
Reactivity:	Human
Host:	Rabbit
Isotype:	IgG
Clonality:	Polyclonal
Immunogen:	The immunogen for Anti-C5orf22 antibody is: synthetic peptide directed towards the middle region of Human C5orf22. Synthetic peptide located within the following region: QLDVIMVKPYKLCNNQEENDAVSSAKKPKLALEDSENTASTNCDSSSEGL
Formulation:	Liquid. Purified antibody supplied in 1x PBS buffer with 0.09% (w/v) sodium azide and 2% sucrose.
Conjugation:	Unconjugated
Storage:	Store at -20°C as received.
Stability:	Stable for 12 months from date of receipt.
Predicted Protein Size:	49 kDa
Gene Name:	chromosome 5 open reading frame 22
Database Link:	NP_060826 Entrez Gene 55322 Human Q49AR2
Background:	The function of this protein remains unknown.
Synonyms:	DKFZp667N066; FLJ11193; FLJ23805; MGC33010
Note:	Dog: 100%; Human: 100%; Horse: 93%; Bovine: 93%; Pig: 86%; Rabbit: 86%; Rat: 85%



[View online »](#)

Product images:

Host: Rabbit; Target Name: C5orf22; Sample Tissue: Fetal Brain lysates; Antibody Dilution: 1.0ug/ml