

Product datasheet for **TA330675**

Tma16 Rabbit Polyclonal Antibody

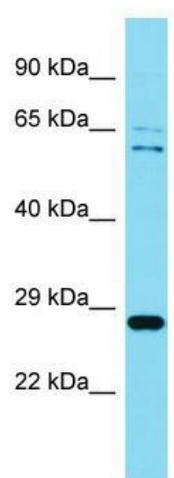
Product data:

Product Type:	Primary Antibodies
Applications:	WB
Recommended Dilution:	WB
Reactivity:	Mouse
Host:	Rabbit
Isotype:	IgG
Clonality:	Polyclonal
Immunogen:	The immunogen for Anti-Tma16 antibody is: synthetic peptide directed towards the middle region of Mouse Tma16. Synthetic peptide located within the following region: IGDKLQWFHSHLDMKKTRYSKDACELVERYLDRFSSELEQIELQNSIKD
Formulation:	Liquid. Purified antibody supplied in 1x PBS buffer with 0.09% (w/v) sodium azide and 2% sucrose.
Conjugation:	Unconjugated
Storage:	Store at -20°C as received.
Stability:	Stable for 12 months from date of receipt.
Predicted Protein Size:	24 kDa
Gene Name:	translation machinery associated 16
Database Link:	NP_079741 Entrez Gene 66282 Mouse Q9CR02
Background:	The function of this protein remains unknown.
Synonyms:	C4orf43
Note:	Rat: 100%; Human: 100%; Mouse: 91%; Horse: 86%; Rabbit: 85%; Pig: 79%; Guinea pig: 79%



[View online »](#)

Product images:



Host: Rabbit; Target Name: Tma16; Sample
Tissue: Mouse Spleen lysates; Antibody Dilution:
1.0ug/ml