

Product datasheet for **TA330673**

TMEM143 Rabbit Polyclonal Antibody

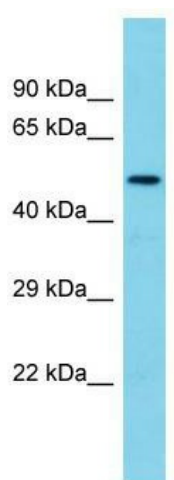
Product data:

Product Type:	Primary Antibodies
Applications:	WB
Recommended Dilution:	WB
Reactivity:	Human
Host:	Rabbit
Isotype:	IgG
Clonality:	Polyclonal
Immunogen:	The immunogen for Anti-TMEM143 antibody is: synthetic peptide directed towards the N-terminal region of Human TMEM143. Synthetic peptide located within the following region: GPPRALSSLAAKMGEYRKMWNPREDWAQYRERFIPFSKEQLLRLLIQ
Formulation:	Liquid. Purified antibody supplied in 1x PBS buffer with 0.09% (w/v) sodium azide and 2% sucrose. <i>Note that this product is shipped as lyophilized powder to China customers.</i>
Conjugation:	Unconjugated
Storage:	Store at -20°C as received.
Stability:	Stable for 12 months from date of receipt.
Predicted Protein Size:	50 kDa
Gene Name:	transmembrane protein 143
Database Link:	NP_060743 Entrez Gene 55260 Human Q96AN5
Background:	The function of this protein remains unknown.
Synonyms:	FLJ10922
Note:	Human: 100%; Dog: 93%; Pig: 93%; Rat: 93%; Bovine: 93%; Rabbit: 93%; Guinea pig: 93%; Horse: 86%; Mouse: 86%
Protein Families:	Transmembrane



[View online »](#)

Product images:



Host: Rabbit; Target Name: TMEM143; Sample Tissue: Fetal Brain lysates; Antibody Dilution: 1.0ug/ml