

Product datasheet for **TA330672**

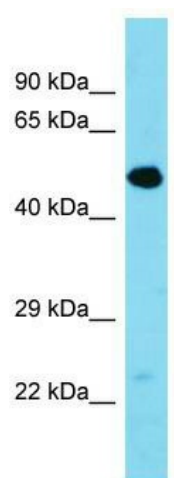
Tmem39a Rabbit Polyclonal Antibody

Product data:

| | |
|-------------------------|-----------------------------------------------------------------------------------------------------------------------------------------------------------------------------------------------------------------------------|
| Product Type: | Primary Antibodies |
| Applications: | WB |
| Recommended Dilution: | WB |
| Reactivity: | Mouse |
| Host: | Rabbit |
| Isotype: | IgG |
| Clonality: | Polyclonal |
| Immunogen: | The immunogen for Anti-Tmem39a antibody is: synthetic peptide directed towards the middle region of Mouse Tmem39a. Synthetic peptide located within the following region: LGKWQKLEHGFYSNAPQHIWSENTIWPQGVLRHSRCLYRAMGPYNVAVP |
| Formulation: | Liquid. Purified antibody supplied in 1x PBS buffer with 0.09% (w/v) sodium azide and 2% sucrose. |
| Conjugation: | Unconjugated |
| Storage: | Store at -20°C as received. |
| Stability: | Stable for 12 months from date of receipt. |
| Predicted Protein Size: | 53 kDa |
| Gene Name: | transmembrane protein 39a |
| Database Link: | NP_080683 Entrez Gene 67846 Mouse Q9CYC3 |
| Background: | The function of this protein remains unknown. |
| Synonyms: | FLJ10902 |
| Note: | Dog: 100%; Pig: 100%; Rat: 100%; Horse: 100%; Human: 100%; Bovine: 100%; Guinea pig: 100%; Mouse: 93%; Rabbit: 93% |



[View online »](#)

Product images:

Host: Rabbit; Target Name: Tmem39a; Sample
Tissue: Mouse Pancreas lysates; Antibody
Dilution: 1.0ug/ml