

Product datasheet for **TA330671**

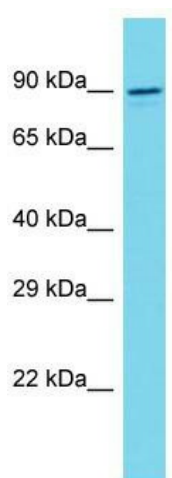
VRTN Rabbit Polyclonal Antibody

Product data:

Product Type:	Primary Antibodies
Applications:	WB
Recommended Dilution:	WB
Reactivity:	Human
Host:	Rabbit
Isotype:	IgG
Clonality:	Polyclonal
Immunogen:	The immunogen for Anti-VRTN antibody is: synthetic peptide directed towards the C-terminal region of Human VRTN. Synthetic peptide located within the following region: GGQEAEKQKEAGRDTVAVMAPPVGASSEDVEGGPSREGALQEGATAQG
Formulation:	Liquid. Purified antibody supplied in 1x PBS buffer with 0.09% (w/v) sodium azide and 2% sucrose. <i>Note that this product is shipped as lyophilized powder to China customers.</i>
Conjugation:	Unconjugated
Storage:	Store at -20°C as received.
Stability:	Stable for 12 months from date of receipt.
Predicted Protein Size:	77 kDa
Gene Name:	vertebrae development associated
Database Link:	NP_060698 Entrez Gene 55237 Human Q9H8Y1
Background:	The function of this protein remains unknown.
Synonyms:	C14orf115; vertnin
Note:	Human: 100%; Dog: 92%; Pig: 92%



[View online »](#)

Product images:

Host: Rabbit; Target Name: VRTN; Sample Tissue: NCI-H226 Whole Cell lysates; Antibody Dilution: 1.0ug/ml; VRTN is supported by BioGPS gene expression data to be expressed in NCIH226