

Product datasheet for **TA330670**

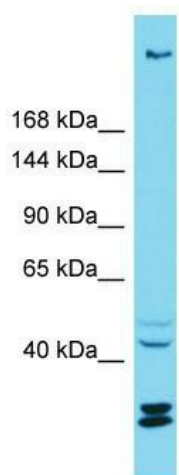
C12orf35 (KIAA1551) Rabbit Polyclonal Antibody

Product data:

Product Type:	Primary Antibodies
Applications:	WB
Recommended Dilution:	WB
Reactivity:	Human
Host:	Rabbit
Isotype:	IgG
Clonality:	Polyclonal
Immunogen:	The immunogen for Anti-KIAA1551 antibody is: synthetic peptide directed towards the C-terminal region of Human KIAA1551. Synthetic peptide located within the following region: KEQAPLQVSGIKSTKEDWLK FVATKKRTQKDSQERDNVNSRLSKRSFSAD
Formulation:	Liquid. Purified antibody supplied in 1x PBS buffer with 0.09% (w/v) sodium azide and 2% sucrose.
Conjugation:	Unconjugated
Storage:	Store at -20°C as received.
Stability:	Stable for 12 months from date of receipt.
Predicted Protein Size:	192 kDa
Gene Name:	KIAA1551
Database Link:	NP_060639 Entrez Gene 55196 Human Q9HCM1
Background:	The function of this protein remains unknown.
Synonyms:	C12orf35; UTA2-1
Note:	Human: 100%


[View online »](#)

Product images:



Host: Rabbit; Target Name: KIAA1551; Sample
Tissue: ACHN Whole cell lysates; Antibody
Dilution: 1.0ug/ml