

## Product datasheet for **TA330669**

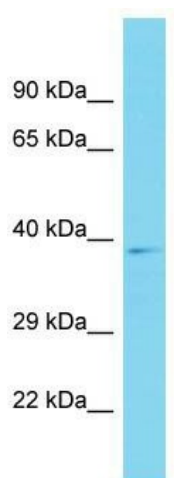
### CCDC198 Rabbit Polyclonal Antibody

#### Product data:

Product Type:	Primary Antibodies
Applications:	WB
Recommended Dilution:	WB
Reactivity:	Human
Host:	Rabbit
Isotype:	IgG
Clonality:	Polyclonal
Immunogen:	The immunogen for Anti-C14orf105 antibody is: synthetic peptide directed towards the middle region of Human C14orf105. Synthetic peptide located within the following region: MIRKRQEAQMELKKSLHGEARINKQSPRDHKAKKTLQSTPRNDDHDLTMM
Formulation:	Liquid. Purified antibody supplied in 1x PBS buffer with 0.09% (w/v) sodium azide and 2% sucrose.
Conjugation:	Unconjugated
Storage:	Store at -20°C as received.
Stability:	Stable for 12 months from date of receipt.
Predicted Protein Size:	36 kDa
Gene Name:	chromosome 14 open reading frame 105
Database Link:	<a href="#">NP_060638</a> <a href="#">Entrez Gene 55195 Human</a> <a href="#">Q9NVL8</a>
Background:	The function of this protein remains unknown.
Synonyms:	FLJ10650
Note:	Human: 100%; Rat: 86%; Dog: 85%; Horse: 85%; Bovine: 83%; Pig: 77%



[View online »](#)

**Product images:**

Host: Rabbit; Target Name: C14orf105; Sample  
Tissue: THP-1 Whole Cell lysates; Antibody  
Dilution: 1.0ug/ml