

Product datasheet for **TA330668**

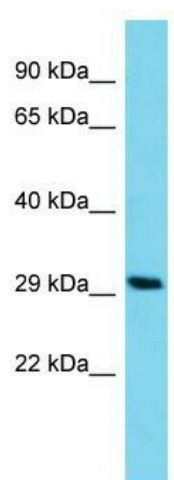
CCDC198 Rabbit Polyclonal Antibody

Product data:

Product Type:	Primary Antibodies
Applications:	WB
Recommended Dilution:	WB
Reactivity:	Human
Host:	Rabbit
Isotype:	IgG
Clonality:	Polyclonal
Immunogen:	The immunogen for Anti-C14orf105 antibody is: synthetic peptide directed towards the C-terminal region of Human C14orf105. Synthetic peptide located within the following region: WKIGKMETWLHEQEAQGQLLWDSSSSDSDEQKDEKKPRALVTRTRTERIP
Formulation:	Liquid. Purified antibody supplied in 1x PBS buffer with 0.09% (w/v) sodium azide and 2% sucrose. <i>Note that this product is shipped as lyophilized powder to China customers.</i>
Conjugation:	Unconjugated
Storage:	Store at -20°C as received.
Stability:	Stable for 12 months from date of receipt.
Predicted Protein Size:	33 kDa
Gene Name:	chromosome 14 open reading frame 105
Database Link:	NP_060638 Entrez Gene 55195 Human Q9NVL8
Background:	The function of this protein remains unknown.
Synonyms:	FLJ10650
Note:	Human: 100%; Horse: 86%; Yeast: 83%; Rabbit: 83%



[View online »](#)

Product images:

Host: Rabbit; Target Name: C14orf105; Sample
Tissue: HCT15 Whole Cell lysates; Antibody
Dilution: 1.0ug/ml