

Product datasheet for **TA330663**

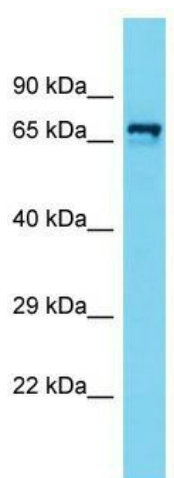
ZCWPW1 Rabbit Polyclonal Antibody

Product data:

Product Type:	Primary Antibodies
Applications:	WB
Recommended Dilution:	WB
Reactivity:	Human
Host:	Rabbit
Isotype:	IgG
Clonality:	Polyclonal
Immunogen:	The immunogen for Anti-ZCWPW1 antibody is: synthetic peptide directed towards the N-terminal region of Human ZCWPW1. Synthetic peptide located within the following region: KATMKNVPSREQEKKRKAQINKQAEKKEKEKSSLTNAEFEEIVQIVLQKS
Formulation:	Liquid. Purified antibody supplied in 1x PBS buffer with 0.09% (w/v) sodium azide and 2% sucrose. <i>Note that this product is shipped as lyophilized powder to China customers.</i>
Conjugation:	Unconjugated
Storage:	Store at -20°C as received.
Stability:	Stable for 12 months from date of receipt.
Predicted Protein Size:	71 kDa
Gene Name:	zinc finger CW-type and PWWP domain containing 1
Database Link:	NP_060454 Entrez Gene 55063 Human Q9H0M4
Background:	The function of this protein remains unknown.
Synonyms:	ZCW1
Note:	Human: 100%; Pig: 92%; Dog: 85%; Horse: 85%; Rabbit: 85%



[View online »](#)

Product images:

Host: Rabbit; Target Name: ZCWPW1; Sample Tissue: OVCAR-3 Whole Cell lysates; Antibody Dilution: 1.0ug/ml; ZCWPW1 is supported by BioGPS gene expression data to be expressed in OVCAR-3