

Product datasheet for **TA330662**

MOSC2 (MARC2) Rabbit Polyclonal Antibody

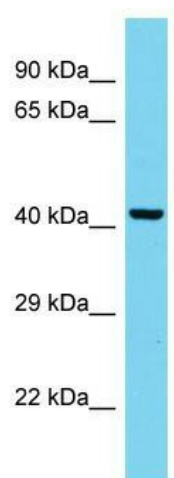
Product data:

Product Type:	Primary Antibodies
Applications:	WB
Recommended Dilution:	WB
Reactivity:	Human
Host:	Rabbit
Isotype:	IgG
Clonality:	Polyclonal
Immunogen:	The immunogen for Anti-MARC2 antibody is: synthetic peptide directed towards the C-terminal region of Human MARC2. Synthetic peptide located within the following region: ACPRCILTTPDPTGVIDRKQPLDTLKSYRLCDPSERELYKLSPLFGIYY
Formulation:	Liquid. Purified antibody supplied in 1x PBS buffer with 0.09% (w/v) sodium azide and 2% sucrose. <i>Note that this product is shipped as lyophilized powder to China customers.</i>
Conjugation:	Unconjugated
Storage:	Store at -20°C as received.
Stability:	Stable for 12 months from date of receipt.
Predicted Protein Size:	38 kDa
Gene Name:	mitochondrial amidoxime reducing component 2
Database Link:	NP_060368 Entrez Gene 54996 Human Q969Z3
Background:	As a component of the benzamidoxime prodrug-converting complex, MARC2 is required to reduce N-hydroxylated prodrugs, such as benzamidoxime. It also able to reduce N(omega)-hydroxy-L-arginine (NOHA) and N(omega)-hydroxy-N(delta)-methyl-L-arginine (NHAM) into L-arginine and N(delta)-methyl-L-arginine.
Synonyms:	MOSC2
Note:	Human: 100%; Bovine: 91%; Dog: 82%; Mouse: 79%
Protein Families:	Transmembrane



[View online »](#)

Product images:



Host: Rabbit; Target Name: MARC2; Sample
Tissue: HepG2 Whole Cell lysates; Antibody
Dilution: 1.0ug/ml