

Product datasheet for **TA330661**

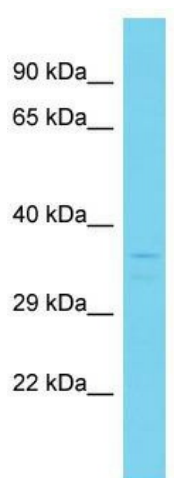
C4orf27 (HPF1) Rabbit Polyclonal Antibody

Product data:

Product Type:	Primary Antibodies
Applications:	WB
Recommended Dilution:	WB
Reactivity:	Human
Host:	Rabbit
Isotype:	IgG
Clonality:	Polyclonal
Immunogen:	The immunogen for Anti-C4orf27 antibody is: synthetic peptide directed towards the N-terminal region of Human C4orf27. Synthetic peptide located within the following region: GPQCEKTTDVKSKFCEADVSSDLRKEVENHYKLSLPEDFYHFWKFCEEL
Formulation:	Liquid. Purified antibody supplied in 1x PBS buffer with 0.09% (w/v) sodium azide and 2% sucrose. <i>Note that this product is shipped as lyophilized powder to China customers.</i>
Conjugation:	Unconjugated
Storage:	Store at -20°C as received.
Stability:	Stable for 12 months from date of receipt.
Predicted Protein Size:	38 kDa
Gene Name:	histone PARylation factor 1
Database Link:	NP_060337 Entrez Gene 54969 Human Q9NWX4
Background:	The function of this protein remains unknown.
Synonyms:	C4orf27
Note:	Human: 100%; Horse: 93%; Dog: 86%; Rat: 86%; Mouse: 86%; Pig: 79%; Bovine: 79%; Rabbit: 79%



[View online »](#)

Product images:

Host: Rabbit; Target Name: C4orf27; Sample Tissue: 721_B Whole Cell lysates; Antibody Dilution: 1.0ug/ml; C4orf27 is supported by BioGPS gene expression data to be expressed in 721_B