

## Product datasheet for TA330660

### C12orf41 (KANSL2) Rabbit Polyclonal Antibody

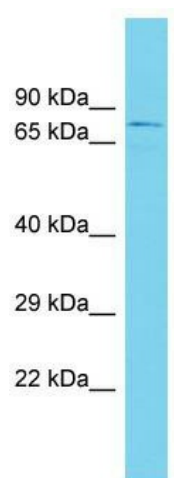
#### Product data:

Product Type:	Primary Antibodies
Applications:	WB
Recommended Dilution:	WB
Reactivity:	Human
Host:	Rabbit
Isotype:	IgG
Clonality:	Polyclonal
Immunogen:	The immunogen for Anti-KANSL2 antibody is: synthetic peptide directed towards the middle region of Human KANSL2. Synthetic peptide located within the following region: PNAAPKPEKKDGVSFCAEHVRRNALALHAQMKTNP GPVGETLLCQLSSY
Formulation:	Liquid. Purified antibody supplied in 1x PBS buffer with 0.09% (w/v) sodium azide and 2% sucrose.
Conjugation:	Unconjugated
Storage:	Store at -20°C as received.
Stability:	Stable for 12 months from date of receipt.
Predicted Protein Size:	74 kDa
Gene Name:	KAT8 regulatory NSL complex subunit 2
Database Link:	<a href="#">NP_060292</a> <a href="#">Entrez Gene 54934 Human</a> <a href="#">Q9H9L4</a>
Background:	The function of this protein remains unknown.
Synonyms:	C12orf41; NSL2
Note:	Dog: 100%; Pig: 100%; Rat: 100%; Goat: 100%; Horse: 100%; Human: 100%; Mouse: 100%; Rabbit: 100%; Bovine: 93%; Guinea pig: 93%; Zebrafish: 86%



[View online »](#)

## Product images:



Host: Rabbit; Target Name: KANSL2; Sample  
Tissue: Placenta lysates; Antibody Dilution:  
1.0ug/ml