

## Product datasheet for **TA330659**

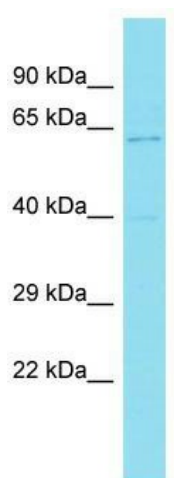
### **C12orf41 (KANSL2) Rabbit Polyclonal Antibody**

#### **Product data:**

<b>Product Type:</b>	Primary Antibodies
<b>Applications:</b>	WB
<b>Recommended Dilution:</b>	WB
<b>Reactivity:</b>	Human
<b>Host:</b>	Rabbit
<b>Isotype:</b>	IgG
<b>Clonality:</b>	Polyclonal
<b>Immunogen:</b>	The immunogen for Anti-KANSL2 antibody is: synthetic peptide directed towards the N-terminal region of Human KANSL2. Synthetic peptide located within the following region: CSHPRLEGQEFCKHILEDKNAPFKQCSYISTKNGKRCPNAAAPKPEKKDG
<b>Formulation:</b>	Liquid. Purified antibody supplied in 1x PBS buffer with 0.09% (w/v) sodium azide and 2% sucrose. <i>Note that this product is shipped as lyophilized powder to China customers.</i>
<b>Conjugation:</b>	Unconjugated
<b>Storage:</b>	Store at -20°C as received.
<b>Stability:</b>	Stable for 12 months from date of receipt.
<b>Predicted Protein Size:</b>	43 kDa
<b>Gene Name:</b>	KAT8 regulatory NSL complex subunit 2
<b>Database Link:</b>	<a href="#">NP_060292</a> <a href="#">Entrez Gene 54934 Human</a> <a href="#">Q9H9L4</a>
<b>Background:</b>	As part of the NSL complex KANSL2 is involved in acetylation of nucleosomal histone H4 on several lysine residues and therefore may be involved in the regulation of transcription.
<b>Synonyms:</b>	C12orf41; NSL2
<b>Note:</b>	Pig: 100%; Human: 100%; Rabbit: 100%; Dog: 93%; Rat: 93%; Goat: 93%; Horse: 93%; Guinea pig: 93%; Mouse: 86%; Bovine: 86%; Zebrafish: 86%



[View online »](#)

**Product images:**

Host: Rabbit; Target Name: KANSL2; Sample Tissue: HeLa Whole Cell lysates; Antibody Dilution: 1.0ug/ml; KANSL2 is supported by BioGPS gene expression data to be expressed in HeLa